

LEGEND LAKE ESTATES

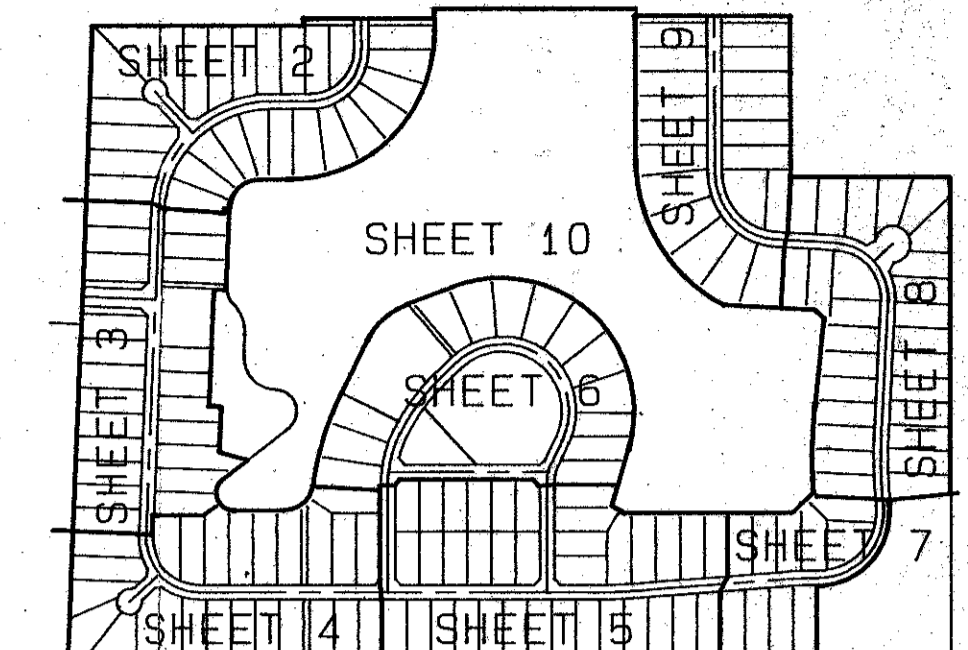
A REPLAT OF A PORTION OF "THE HUNT", P. U. D., PLAT BOOK 32, PAGES 119 THOUGH 125
SITUATE IN SECTION 30 AND 31, TOWNSHIP 44 SOUTH, RANGE 42 EAST,
PALM BEACH COUNTY, FLORIDA.

JANUARY, 1992

SHEET 9 OF 10

0467-001

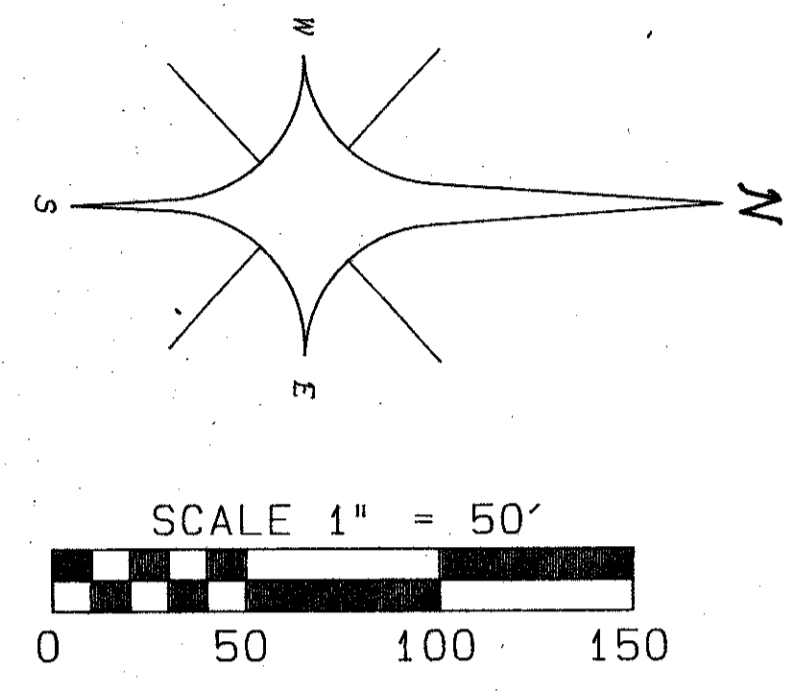
47



KEY MAP

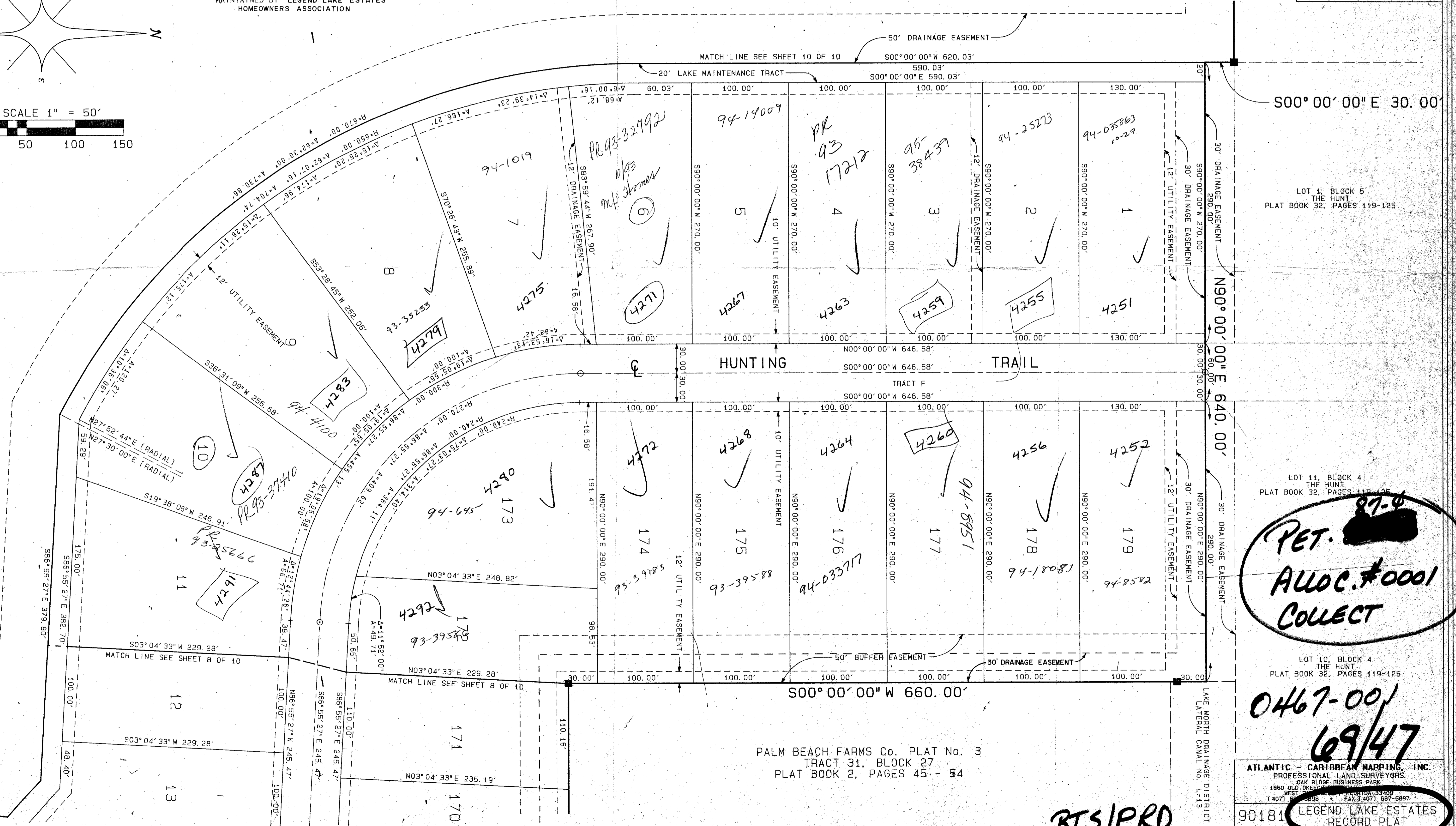
STATE OF FLORIDA }
COUNTY OF PALM BEACH } SS
THIS PLAT WAS FILED FOR
RECORD AT _____ DAY OF
THIS _____ AD, 1992 AND
DULY RECORDED IN PLAT BOOK
_____ ON PAGES _____
Milton T. Bower, CLERK
CIRCUIT COURT
BY: _____ DC

TRACT D
WATER MANAGEMENT TRACT
MAINTAINED BY LEGEND LAKE ESTATES
HOMEOWNERS ASSOCIATION



SUBDIVISION # LEGEND LAKE ESTATES
BOOK 47
PAGE 47
FLOOD MAP # 170A
QUAD # 48
ZONING RE
SE
ZIP CODE 33467
P.U.D. NAME THE HUNT
0467-001

TAZ-798



LOT 1, BLOCK 5
THE HUNT
PLAT BOOK 32, PAGES 119-125

LOT 11, BLOCK 4
THE HUNT
PLAT BOOK 32, PAGES 119-125

PET. [REDACTED]
ALLOC. #0001
COLLECT

LOT 10, BLOCK 4
THE HUNT
PLAT BOOK 32, PAGES 119-125

0467-001
69/47

PALM BEACH FARMS Co. PLAT No. 3
TRACT 31, BLOCK 27
PLAT BOOK 2, PAGES 45-54

ATLANTIC - CARIBBEAN MAPPING, INC.
PROFESSIONAL LAND SURVEYORS
OAK RIDGE BUSINESS PARK
1860 OLD OKEECHOBEE ROAD, FORT LAUDERDALE, FL 33409
(407) 551-8898 FAX (407) 687-5897
90181 LEGEND LAKE ESTATES
RECORD PLAT

RTS/PRD